

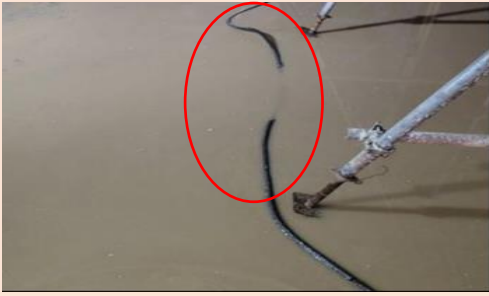


# MAKING BUSINESSES SAFER

The StartSAFE programme helps small and medium enterprises identify WSH risks and implement good WSH practices at their workplaces. The following are some examples of corrective actions undertaken by companies.

SN	Before	After
1	 <p>Observation: A forklift ignition key was left unattended when parked. This may invite unauthorised operation.</p>	 <p>Corrective action: The forklift operator was instructed to remove or return the ignition key after used.</p>
2	 <p>Observation: Poor housekeeping may pose a trip and fall hazard.</p>	 <p>Corrective action: The company cleaned up and was instructed to maintain good housekeeping within the premises.</p>

3



Observation:  
An electrical cable was submerged in water on the ground, posing an electrical hazard.



Corrective action:  
Overhead hangers with insulated material for electrical cables were installed.

4



Observation:  
Temporary steps were not demarcated, posing slip, trip and fall risks.



Corrective action:  
The steps were demarcated to increase its visibility for workers.

5



Observation:  
Lack of barricades and warning signage may invite unauthorised entry by members of the public.



Corrective action:  
Barricade and warning signage were provided to caution members of the public not to enter the construction area.

6



Observation:  
Illegal parking of trolleys at staircase landing obstructs escape route in the event of a fire.



Corrective action:  
Trolleys were removed to give a clear and unobstructed access to the fire escape route.

7



Observation:  
No wheel chocks were provided to prevent the stationary truck from accidentally rolling.



Corrective action:  
Wheel chocks were added to the tyres to prevent accidental rolling.

8



Observation:  
Exposed nails may stab or scratch workers.



Corrective action:  
Pallet box was closed up to remove exposed nails.





Observation:  
Exposed wire sheath may cause electrocution.



Corrective action:  
Use a Power socket that is in good condition.